



MODEL 1678

80g Agitation Unit

Operating Manual



INTRODUCTION

GENERAL INSTRUCTIONS



CAUTION

READ AND UNDERSTAND ALL LABELS, MSDS, AND THIS INSTRUCTION MANUAL BEFORE USE.

The Industrial Solvent Parts Cleaner is an economical, safe, and innovative system designed to clean parts, using a mineral spirits based solvent. Solvents, when used to clean grease and oil, must be disposed of properly. Consult your local environmental management agency for additional guidance and other potentially hazardous materials compliance requirements.

Install your parts cleaner on a flat, level surface in an area provided with adequate ventilation. Avoid repeated or prolonged breathing of vapors. Do **NOT** use compressed air to dry parts as this may cause a high concentration of vapors in the immediate area. Local exhaust ventilation should be used in areas of high vapor concentration. Provisions for determining and maintaining adequate ventilation are the responsibility of the operator.

Make sure the parts cleaner is connected to a properly grounded power source. Check serial plate for power requirements.

Do **not** allow parts cleaner to operate unattended.

Complete safety in use is dependent upon proper use and handling of the parts cleaner in your workplace.

It is important that you follow the instructions provided in this manual. If you fail to read, understand, and follow all of the procedures in this manual, you may cause or suffer personal injury.

DO NOT OPERATE ELECTRICAL EQUIPMENT INSIDE OF PARTS CLEANER.



CAUTION

USE ONLY MINERAL SPIRITS BASED SOLVENTS

DO NOT USE WATER-BASED CLEANING SOLUTIONS

This equipment is designed for use only with mineral spirit based solvents with a flash point greater than 40°C (104°F). Do **NOT** add any other chemicals to the cleaning agent including, but not limited to, kerosene, fuel oil, gasoline, or chlorinated solutions. The use of any other solutions could potentially cause a hazardous condition.

Avoid contact with eyes or skin. Wear protective eyewear, gloves, and clothing. Operation should be conducted in a manner, which prevents splashing, or spillage. Any spills should be promptly and properly cleaned up. Soak up all spills with absorbent material. Remove and dispose of all soaked material in accordance with regulatory requirements.

- This unit is **NOT** intended for outdoor operation.
- Do **NOT** leave solvent-soaked rags in parts cleaner or in uncovered containers.
- Do **NOT** obstruct the cover. It is designed to close automatically in the event of a fire. The safety link and cover closing mechanism must be intact. Do **NOT** substitute with any other type of cover positioning device. Do **NOT** leave large objects in the parts cleaner or hang anything on the cover that could prevent the cover from closing in the event of a fire.
- Do **NOT** place heavy objects on edges or front of sink. Although this parts cleaner is designed to be stable, uneven weight distribution could cause a hazardous condition.
- Do **NOT** contaminate cleaning solvents with gasoline, alcohol or flammable liquids.
- When cleaning carburetors or other fuel supplying components: remove all gasoline into a proper disposal container before placing the component into the parts cleaner.
- Do **NOT** spray aerosols into or around this machine. Install the equipment in an area away from heat, sparks, and open flame. Never put hot parts into the solution.
- Do **NOT** use compressed air to dry parts. Be sure parts, especially brake parts, are completely dry prior to reassembly.
- Turn unit "OFF" and close lid when equipment is not in use. This will reduce evaporation.

IMPORTANT SAFETY INSTRUCTIONS

1. Read all instructions.
2. Do not operate equipment with a damaged cord or if the equipment has been dropped or damaged – until it has been examined by a qualified service person.

3. If an extension cord is necessary, a cord with a current rating equal to or more than that of the equipment should be used. Cords rated for less current than the equipment may overheat. Care should be taken to arrange the cord so that it will not be tripped over or pulled.
4. Always unplug equipment from electrical outlet when not in use. Never use the cord to pull the plug from the outlet. Grasp plug and pull to disconnect.
5. To reduce the risk of fire, do **NOT** operate equipment in the vicinity of open containers of flammable liquids (gasoline).
6. To reduce the risk of electric shock, do **NOT** use on wet surfaces or expose to rain.
7. Use only as described in this manual. Use only manufacturer's recommended attachments.
8. **ALWAYS WEAR PROPER PPE**
9. Do **NOT** operate any electrical equipment inside sink or vat.
10. Do **NOT** use light bulbs rated over 40 watts.
11. Do **NOT** smoke, eat or drink in the work area.
12. Do **NOT** modify these machines.
13. Do **NOT** operate this unit in any manner that will cause splashing or cause mist to form.
14. Use only the mineral spirit based solvent provided.
15. Adjust flexible nozzle or flow-thru brush so solution is directed to inside the sink only.
16. On the Control box, set the breaker switches to **OFF** before plugging in unit.
17. In any emergency, turn off the unit.
18. These parts washers employ a safety feature called a fusible link that holds the cover open during use. Do **NOT** modify, alter, or obstruct the operation of the fusible link.
19. Keep cover closed whenever unit is not in use.
20. Do **NOT** remove fluid from this equipment or it may cause malfunction or unsafe conditions.

SAVE THESE INSTRUCTIONS

SERVICE

- Call your representative should your parts cleaner need service and always unplug unit when servicing.
- Inspect and keep in good working order the power cord and all electrical components. If components show signs of damage or wear replace immediately. All work should be done by a trained technician.

- Do **NOT** replace pump before unplugging unit.
- Do **NOT** replace fusible link with any other device to hold lid up. If fusible link should fail, for any reason, call your representative immediately.

INSTALLATION

- Position equipment on a hard level surface in a well-ventilated area.
- Check to make sure that the rollers are on the roller guides. The rollers are located inside of the machine on the back of the lift.
- Mount the cylinder housing to the machine, and secure with four 10-32 screws. **CAUTION:** Make sure not to pinch any air lines.
- Connect an air supply line of **80-120 PSIG (5.5-8.3bar)** to the air inlet on the back of the control box.
- Turn the agitation selector switch to the up, down, and agitate positions to make sure the machine operates correctly.
- Fill solution reservoir to the correct level. This equipment is designed for use only with a mineral spirit based solvents with a flash point greater than 40° C (104° F). Do **NOT** add any other chemicals to the cleaning agent including, but not limited to, kerosene, fuel oil, gasoline, or chlorinated solutions. The use of any other solutions could potentially cause a hazardous condition.

Capacity Model 1678 = 80 gal. (303 L.)

Minimum Level = 48 gal. (182 L.)

- Power Requirements:
 - For the **pump** to function properly, it must be plugged into the receptacle on the back of the control box (right side of the machine). The power cord from the control box must be connected to a properly grounded power source. *Check serial plate for power requirements.*

115 Volt Pump: 115 volt, 1amp, 60 Hz, 1PH

- Weight capacity for this parts cleaner is **250LBS. Do not exceed rated load.**

ADDITIONAL SPECIFICATIONS

- Overall Dimensions: 33"W x 51 1/2"L x 66 1/2"H
- Inside Dimensions: 27 1/4"W x 44 1/2"L x 28"D
- Carrier Dimensions: 17 1/2" W x 41 1/2" L
- Shipping Dimensions: 36 1/4" W x 56 1/2" L x 56 1/2" H

- Shipping Weight: 556lbs.
- Fluid Capacity: 80 Gallons
- Load Lift Over: 38"
- 115Vac
- 60Hz
- 1PH
- 1Amp
- Pump HP: Fractional
- Load capacity: 250lbs.
- Lift Air Requirements: 8CFM@120PSI

OPERATING INSTRUCTIONS

LOADING (Requires the platform to be in the "UP" position).

1. Open the cover by lifting up.
2. Turn the "PLATFORM CONTROL VALVE" to the "UP" position.
3. When the platform is in its upper-most position, place load on the shelf.

DO NOT EXCEED 250 LBS! DO NOT DROP PARTS ON PLATFORM!

AGITATION – OPERATION

1. Turn the "PLATFORM CONTROL VALVE" to the "AGITATE" position. When the platform reaches the bottom position it will begin agitating.
2. To adjust the agitation speed, turn the "PLATFORM SPEED CONTROL" knob counterclock wise to increase and clock wise to decrease the speed. Note: The speed control has a locking feature, if it will not turn, pull up on the knob.
3. To reduce evaporation, close the cover while the parts are agitating.

SOAKING – OPERATION

1. Turn the "PLATFORM CONTROL VALVE" to the "DOWN" position.
2. Close the cover to reduce evaporation while the parts are soaking.

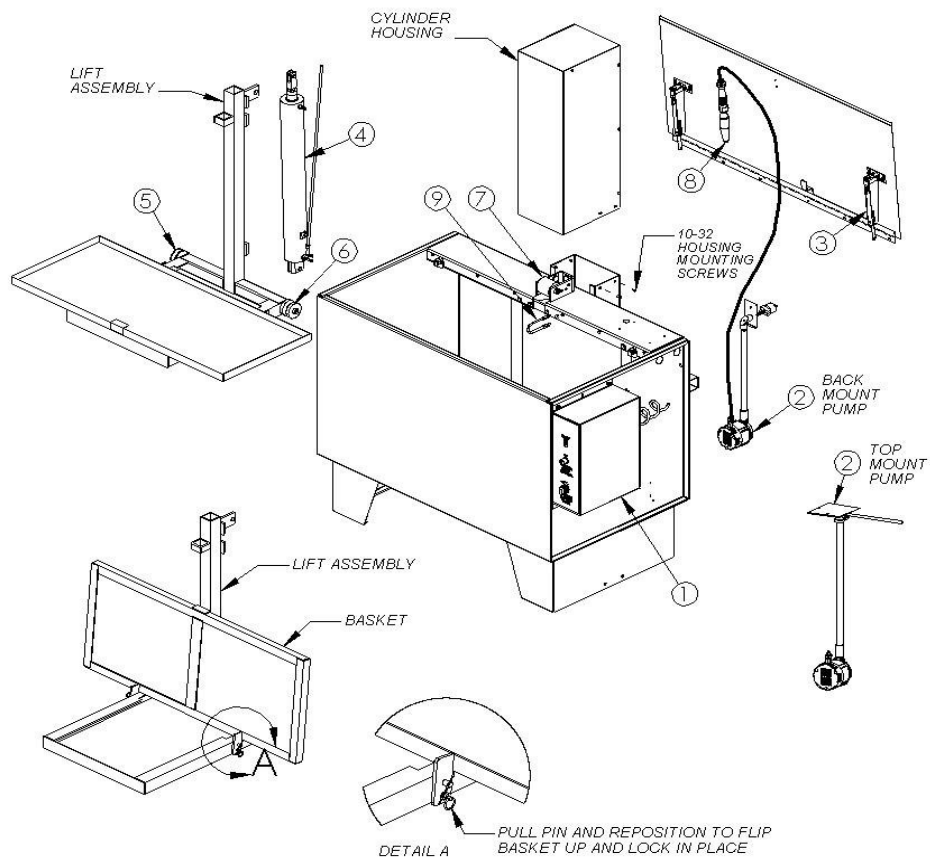
UNLOADING – OPERATION

1. Open the lid of the parts washer.
2. Turn the "PLATFORM CONTROL VALVE" to the "UP" position.
3. When the platform is in its upper-most position, allow parts to drain before removing.

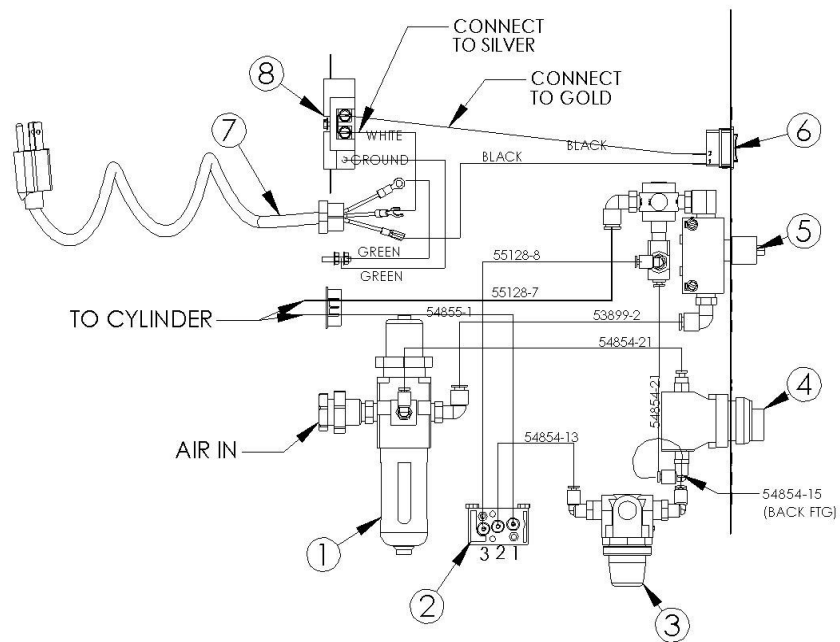
MANUAL PARTS CLEANING – OPERATION

1. Open the lid.
2. Turn the "PLATFORM CONTROL VALVE" to the "UP" position.
3. Turn the pump switch to the "ON" position.
4. Manually clean the parts using the brush.
5. Turn the pump switch to the "OFF" position.
6. Place brush in the brush holder.
7. Unload parts or continue to clean in the agitation operation.

MACHINE DIAGRAM



ITEM	BACK MOUNT PUMP	TOP MOUNT PUMP	DESCRIPTION
1	59650	59650	CONTROL BOX (SEE DETAIL)
2	59659-01	54916	PUMP ASSY
3	55449	55449	DOOR CLOSURE
4	8939	8939	CYLINDER
5	8440	8440	ROLLER, LH
6	01158	01158	ROLLER, RH
7	03500	03500	ROLLER, UPPER
8	8169	8169	BRUSH </td
9	57148	57148	FUSIBLE LINK



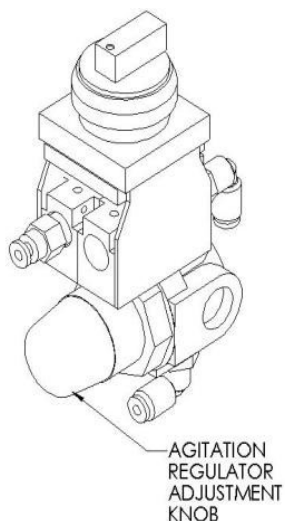
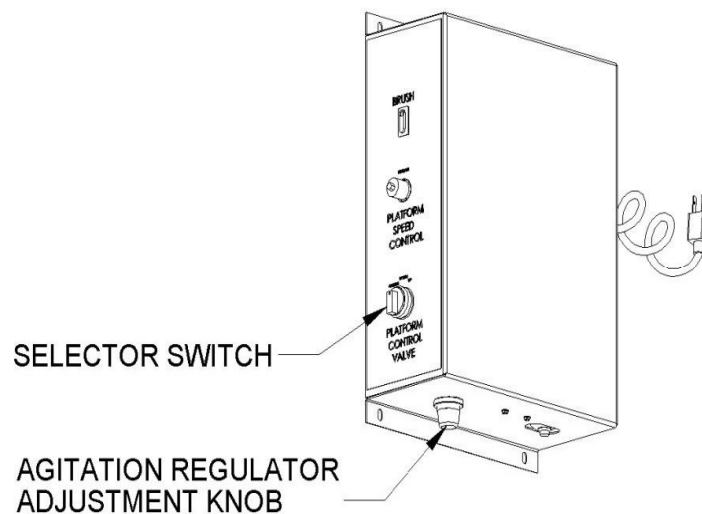
Control Box Assembly

ITEM	115V	DESCRIPTION
1	58387	FILTER/REGULATOR ASSY
2	56968	NOT VALVE ASSY
3	59757	REGULATOR ASSY, AGITATION
4	59756	SWITCH ASSY, 3 POSITION
5	58531	SPEED CONTROL ASSY
6	01122	ROCKER SWITCH
7	59656	POWER CORD
8	01132	RECEPTACLE

NOTICE:

THIS MACHINE IS PRESET AT THE FACTORY TO OPERATE WITH A MINIMUM OF 100 LBS ON THE AGITATION PLATFORM. IF YOU INTEND TO OPERATE THE MACHINE WITH LOADS LESS THAN 100 LBS, YOU WILL NEED TO LOWER THE PRESSURE SETTING ON THE AGITATION REGULATOR ON THE BOTTOM OF THE CONTROL BOX.

1. Place a typical load on the platform.
2. Turn the selector switch to agitate.
3. Pull out on the adjustment knob on the agitation regulator.
4. Rotate the agitation regulator adjustment knob counter clockwise until the lift begins to agitate.
5. Push in the adjustment knob on the regulator to lock the setting.



TROUBLESHOOTING

1. Make sure the parts cleaner is connected to electric power and/or air supply.
2. Check for incoming power. Check serial plate for power requirements.
3. On electric units: check reset button on GFCI cord to make sure it is not tripped. On air units: an increase in air supply may be required.

LITTLE OR NO FLUID FLOW

POSSIBLE CAUSE	SOLUTION
Power cord not plugged in.	Plug in power cord
Pump Switch not turned on.	Turn on pump switch
Inlet to pump obstructed.	Remove obstruction
Crimped/Pinched hose.	Check the hoses, straighten as needed
Not enough fluid in the tank.	Add fluid to fill level

NO AGITATION

POSSIBLE CAUSE	SOLUTION
No air connected to the machine.	Connect to a clean/dry air supply
Not enough air.	Check serial plate for air recommendations
Too much weight on the lift.	Remove some of the weight / 250lbs. Max
Speed control turned off.	Adjust agitation speed
Crimped air line.	Check air lines, straighten crimp

AGITATES AT TOP OF STROKE

POSSIBLE CAUSE	SOLUTION
Not enough weight on the lift.	Add weight, factory tested with 100lbs.
Too much weight on the lift.	Remove some of the weight / 250lbs. Max
Wrong agitation pressure.	Adjust the regulator on the up/down switch
Not enough air.	Check serial plate for recommended air pressure

