



MODEL 1648

45g Tank Unit

Operating Manual



INTRODUCTION

GENERAL INSTRUCTIONS



READ AND UNDERSTAND ALL LABELS, MSDS, AND THIS INSTRUCTION MANUAL BEFORE USE.

The Industrial Solvent Parts Cleaner is an economical, safe, and innovative system designed to clean parts, using a mineral spirit based solvent. Solvents, when used to clean grease and oil, must be disposed of properly. Consult your local environmental management agency for additional guidance and other potentially hazardous materials compliance requirements.

Install your parts cleaner on a flat, level surface in an area provided with adequate ventilation. Avoid repeated or prolonged breathing of vapors. Do **NOT** use compressed air to dry parts as this may cause a high concentration of vapors in the immediate area. Local exhaust ventilation should be used in areas of high vapor concentration. Provisions for determining and maintaining adequate ventilation are the responsibility of the operator.

Make sure the parts cleaner is connected to a properly grounded power source. Check serial plate for power requirements.

Do **not** allow parts cleaner to operate unattended.

Complete safety in use is dependent upon proper use and handling of the parts cleaner in your workplace.

It is important that you follow the instructions provided in this manual. If you fail to read, understand, and follow all of the procedures in this manual, you may cause or suffer personal injury.

DO NOT OPERATE ELECTRICAL EQUIPMENT INSIDE OF PARTS CLEANER.



CAUTION

USE ONLY MINERAL SPIRITS BASED SOLVENTS

DO NOT USE WATER-BASED CLEANING SOLUTIONS

This equipment is designed for use only with mineral spirit based solvents with a flash point greater than 40°C (104°F). Do **NOT** add any other chemicals to the cleaning agent including, but not limited to, kerosene, fuel oil, gasoline, or chlorinated solutions. The use of any other solutions could potentially cause a hazardous condition.

Avoid contact with eyes or skin. Wear protective eyewear, gloves, and clothing. Operation should be conducted in a manner, which prevents splashing, or spillage. Any spills should be promptly and properly cleaned up. Soak up all spills with absorbent material. Remove and dispose of all soaked material in accordance with regulatory requirements.

- This unit is **NOT** intended for outdoor operation.
- Do **NOT** leave solution-soaked rags in parts cleaner or in uncovered containers.
- Do **NOT** obstruct the cover. It is designed to close automatically in the event of a fire. The safety link and cover closing mechanism must be intact. Do **NOT** substitute with any other type of cover positioning device. Do **NOT** leave large objects in the parts cleaner or hang anything on the cover that could prevent the cover from closing in the event of a fire.
- Do **NOT** place heavy objects on edges or front of sink. Although this parts cleaner is designed to be stable, uneven weight distribution could cause a hazardous condition.
- Do **NOT** contaminate cleaning solutions with gasoline, alcohol or flammable liquids.
- When cleaning carburetors or other fuel supplying components: remove all gasoline into a proper disposal container before placing the component into the parts cleaner.
- Do **NOT** spray aerosols into or around this machine. Install the equipment in an area away from heat, sparks, and open flame. Never put hot parts into the solution.
- Do **NOT** use compressed air to dry parts. Be sure parts, especially brake parts, are completely dry prior to reassembly.
- Turn unit "OFF" and close lid when equipment is not in use. This will reduce evaporation.

IMPORTANT SAFETY INSTRUCTIONS

1. Read all instructions.

2. Do not operate equipment with a damaged cord or if the equipment has been dropped or damaged – until it has been examined by a qualified service person.
3. If an extension cord is necessary, a cord with a current rating equal to or more than that of the equipment should be used. Cords rated for less current than the equipment may overheat. Care should be taken to arrange the cord so that it will not be tripped over or pulled.
4. Always unplug equipment from electrical outlet when not in use. Never use the cord to pull the plug from the outlet. Grasp plug and pull to disconnect.
5. To reduce the risk of fire, do **NOT** operate equipment in the vicinity of open containers of flammable liquids (gasoline).
6. To reduce the risk of electric shock, do **NOT** use on wet surfaces or expose to rain.
7. Use only as described in this manual. Use only manufacturer's recommended attachments.
8. **ALWAYS WEAR PROPER PPE**
9. Do **NOT** operate any electrical equipment inside sink or vat.
10. Do **NOT** use light bulbs rated over 40 watts.
11. Do **NOT** smoke, eat or drink in the work area.
12. Do **NOT** modify these machines.
13. Do **NOT** operate this unit in any manner that will cause splashing or cause mist to form.
14. Use only the aqueous solution provided.
15. Adjust flexible nozzle or flow-thru brush so solution is directed to inside the sink only.
16. On the Control box, set the breaker switches to **OFF** before plugging in unit.
17. In any emergency, turn off the unit.
18. These parts washers employ a safety feature called a fusible link that holds the cover open during use. Do **NOT** modify, alter, or obstruct the operation of the fusible link.
19. Keep cover closed whenever unit is not in use.
20. Do **NOT** remove fluid from this equipment or it may cause malfunction or unsafe conditions.

SAVE THESE INSTRUCTIONS

SERVICE

- Call your representative should your parts cleaner need service and always unplug unit when servicing.

- Inspect and keep in good working order the power cord and all electrical components. If components show signs of damage or wear replace immediately. All work should be done by a trained technician.
- Do **NOT** replace pump before unplugging unit.
- Do **NOT** replace fusible link with any other device to hold lid up. If fusible link should fail, for any reason, call your representative immediately.

INSTALLATION

- Remove the parts packed inside the machine and inspect for damage.
- Close the cover on the tank and refold flaps on carton.
- Turn the carton upside down and open the bottom carton flaps.
- Remove the packing from the base ends and place ends on the bottom of the tank.
- Insert two bolts at the back of each base end to hold in place. Do not tighten at this time. See figure 1.
- Place the front panel on to the base ends and insert remaining bolts. See figure 2.
- Assemble brace between base ends. Tighten all bolts.
- Turn the assembly over onto the base and remove the carton.
- Open the cover and place the inner shelf and basket inside the machine. See figure 3.
- Assemble the spray gun onto the end of the hose.
- Fill the machine with 25 to 40 gallons of a mineral spirit based solvents. Do **NOT** add any other chemicals to the cleaning agent including, but not limited to, kerosene, fuel oil, gasoline, or chlorinated solutions. The use of any other solutions could potentially cause a hazardous condition.
- Plug the power cord into a properly grounded power source. See serial number plate for proper voltage.

Power Requirements = 15 amp, 115 volt 60 Hz

Air Requirements to Manifold = Max 120 PSI @ 8 CFM

- Weight capacity for this parts cleaner is **250 LBS**

ADDITIONAL SPECIFICATIONS

- Overall Dimensions: 24"W x 45"L x 36"H
- Inside Dimensions: 23"W x 44"L x 18 1/2"D
- Shipping Weight: 175lbs.
- 115Vac/60HZ/1PH
- 1 Amp

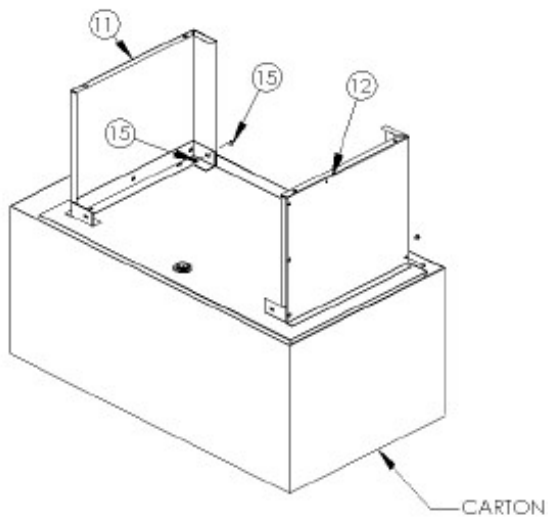


Figure 1

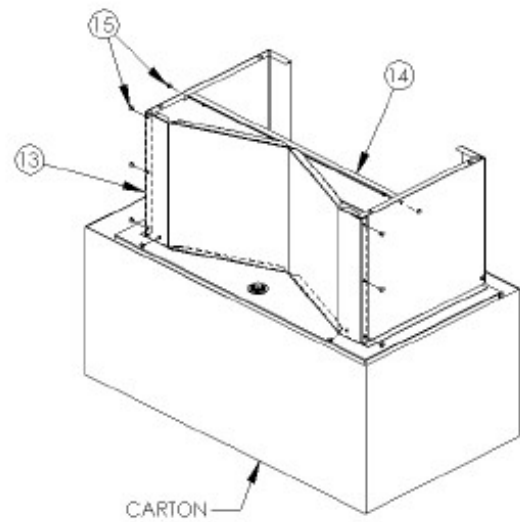


Figure 2

MACHINE DIAGRAMS

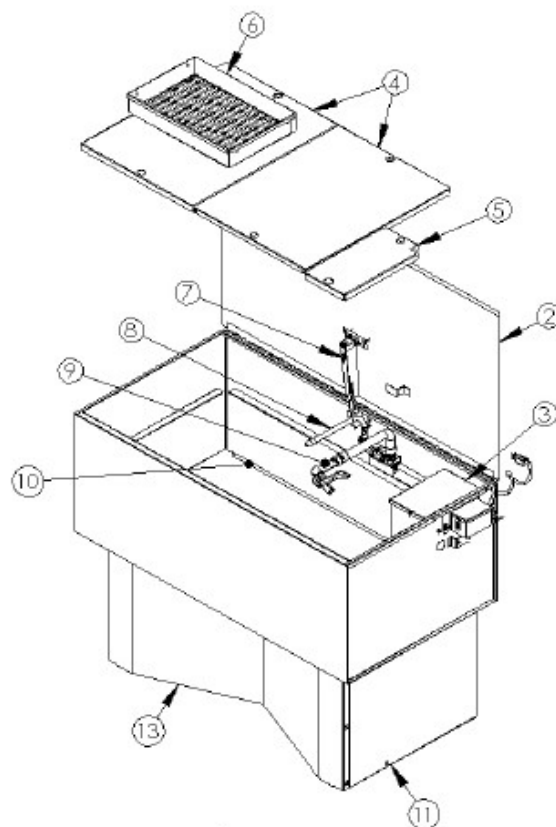
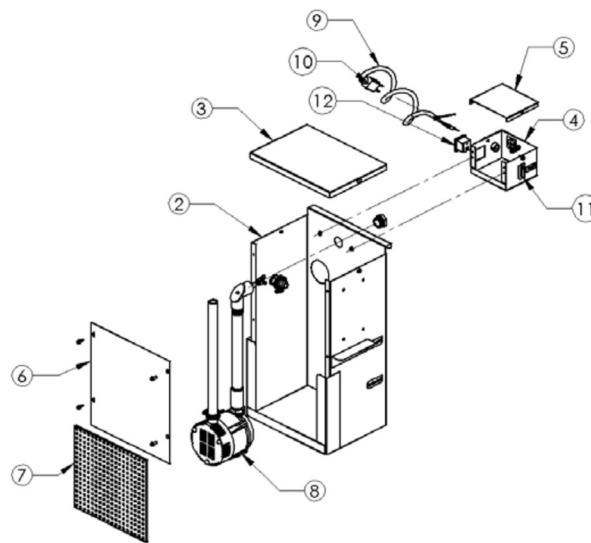


Figure 3

ITEM	QTY	PART NO	DESCRIPTION
1	1	51682	TANK, 40 GALLON
2	1	59489	COVER WELD
3	1	59480-3	MODULE ASSY
4	2	50448	TRAY, LARGE
5	1	50431	TRAY, SMALL
6	1	50023-3	PARTS BASKET
7	1	54268	DOOR CLOSURE
8	1	51391	SPRAY ASSEMBLY, FLEX HOSE
9	1	7241	SPRAY GUN
10	1	51619	AIR MANIFOLD
11	1	51364	END, RH BASE
12	1	51402	END, LH BASE
13	1	51365	FRONT BASE
14	1	51383	BRACE, BASE
15	1	7383	BOLT PKG

MODULE ASSEMBLY



ITEM	QTY	PART NO	DESCRIPTION
1	1	59480-3	MODULE ASSY
2	1	59484	HOUSING WELDMENT
3	1	58423	COVER, MODULE
4	1	60240	CTRL BOX
5	1	58415	COVER, CTRL BOX
6	1	59485	PANLE, FRONT
7	1	51389	FILTER ASSY
8	1	54242	PUMP ASSY
9	1	8612	POWER CORD
10	1	01122	SWITCH
11	1	57387	RECEPTACLE 115V

TROUBLESHOOTING

Machine does not operate:

- Make sure the parts cleaner is connected to electric power or air supply.
- Check for incoming power. Check serial plate for power requirements.
- On electric units: check reset button on GFCI cord to make sure it is not tripped.

Little or no fluid flow thru the flow-thru brush:

- Turn pump switch "ON" or increase air pressure.
- Check the fluid level in the tank.
- Check pump intake for obstructions.

