



MODEL 1602

30g Drum Mount Unit

Operating Manual



INTRODUCTION

GENERAL INSTRUCTIONS



READ AND UNDERSTAND ALL LABELS, MSDS, AND THIS INSTRUCTION MANUAL BEFORE USE.

The Industrial Solvent Parts Cleaner is an economical, safe, and innovative system designed to clean parts, using a mineral spirit based solvent. Solvents, when used to clean grease and oil, must be disposed of properly. Consult your local environmental management agency for additional guidance and other potentially hazardous materials compliance requirements.

Install your parts cleaner on a flat, level surface in an area provided with adequate ventilation. Avoid repeated or prolonged breathing of vapors. Do **NOT** use compressed air to dry parts as this may cause a high concentration of vapors in the immediate area. Local exhaust ventilation should be used in areas of high vapor concentration. Provisions for determining and maintaining adequate ventilation are the responsibility of the operator.

Make sure the parts cleaner is connected to a properly grounded power source. Check serial plate for power requirements.

Do **not** allow parts cleaner to operate unattended.

Complete safety in use is dependent upon proper use and handling of the parts cleaner in your workplace.

It is important that you follow the instructions provided in this manual. If you fail to read, understand, and follow all of the procedures in this manual, you may cause or suffer personal injury.

DO NOT OPERATE ELECTRICAL EQUIPMENT INSIDE OF PARTS CLEANER.



CAUTION

USE ONLY MINERAL SPIRITS BASED SOLVENTS
DO NOT USE WATER-BASED CLEANING SOLUTIONS

This equipment is designed for use only with mineral spirit based solvents with a flash point greater than 40°C (104°F). Do **NOT** add any other chemicals to the cleaning agent including, but not limited to, kerosene, fuel oil, gasoline, or chlorinated solutions. The use of any other solutions could potentially cause a hazardous condition.

Avoid contact with eyes or skin. Wear protective eyewear, gloves, and clothing. Operation should be conducted in a manner, which prevents splashing, or spillage. Any spills should be promptly and properly cleaned up. Soak up all spills with absorbent material. Remove and dispose of all soaked material in accordance with regulatory requirements.

- This unit is **NOT** intended for outdoor operation.
- Do **NOT** leave solution-soaked rags in parts cleaner or in uncovered containers.
- Do **NOT** obstruct the cover. It is designed to close automatically in the event of a fire. The safety link and cover closing mechanism must be intact. Do **NOT** substitute with any other type of cover positioning device. Do **NOT** leave large objects in the parts cleaner or hang anything on the cover that could prevent the cover from closing in the event of a fire.
- Do **NOT** place heavy objects on edges or front of sink. Although this parts cleaner is designed to be stable, uneven weight distribution could cause a hazardous condition.
- Do **NOT** contaminate cleaning solutions with gasoline, alcohol or flammable liquids.
- When cleaning carburetors or other fuel supplying components: remove all gasoline into a proper disposal container before placing the component into the parts cleaner.
- Do **NOT** spray aerosols into or around this machine. Install the equipment in an area away from heat, sparks, and open flame. Never put hot parts into the solution.
- Do **NOT** use compressed air to dry parts. Be sure parts, especially brake parts, are completely dry prior to reassembly.
- Turn unit "OFF" and close lid when equipment is not in use. This will reduce evaporation.

IMPORTANT SAFETY INSTRUCTIONS

1. Read all instructions.

2. Do not operate equipment with a damaged cord or if the equipment has been dropped or damaged – until it has been examined by a qualified service person.
3. If an extension cord is necessary, a cord with a current rating equal to or more than that of the equipment should be used. Cords rated for less current than the equipment may overheat. Care should be taken to arrange the cord so that it will not be tripped over or pulled.
4. Always unplug equipment from electrical outlet when not in use. Never use the cord to pull the plug from the outlet. Grasp plug and pull to disconnect.
5. To reduce the risk of fire, do **NOT** operate equipment in the vicinity of open containers of flammable liquids (gasoline).
6. To reduce the risk of electric shock, do **NOT** use on wet surfaces or expose to rain.
7. Use only as described in this manual. Use only manufacturer's recommended attachments.
8. **ALWAYS WEAR PROPER PPE**
9. Do **NOT** operate any electrical equipment inside sink or vat.
10. Do **NOT** use light bulbs rated over 40 watts.
11. Do **NOT** smoke, eat or drink in the work area.
12. Do **NOT** modify these machines.
13. Do **NOT** operate this unit in any manner that will cause splashing or cause mist to form.
14. Use only the solution provided.
15. Adjust flexible nozzle or flow-thru brush so solution is directed to inside the sink only.
16. On the Control box, set the breaker switches to **OFF** before plugging in unit.
17. In any emergency, turn off the unit.
18. These parts washers employ a safety feature called a fusible link that holds the cover open during use. Do **NOT** modify, alter, or obstruct the operation of the fusible link.
19. Keep cover closed whenever unit is not in use.
20. Do **NOT** remove fluid from this equipment or it may cause malfunction or unsafe conditions.

SAVE THESE INSTRUCTIONS

SERVICE

- Call your representative should your parts cleaner need service and always unplug unit when servicing.

- Inspect and keep in good working order the power cord and all electrical components. If components show signs of damage or wear replace immediately. All work should be done by a trained technician.
- Do **NOT** replace pump before unplugging unit.
- Do **NOT** replace fusible link with any other device to hold lid up. If fusible link should fail, for any reason, call your representative immediately.

INSTALLATION

- Position the drum on a hard level surface in a well-ventilated area.
- Hook the pump assembly to the bracket on the bottom side of the sink.
- Feed the pump cord through the large hole in the pump plate on the back of the machine and snap the cord cover in the hole.
- Feed the hose from the pump through hole in the pump plate on the back of the machine and attach to the hose-barb on the back of the sink. Secure with a hose clamp.
- Place the sink onto the drum.
- Place the strainer and grate in the drain hole in the bottom of the sink.
- Place the control box in the bracket on the right side of the machine. (Star washer must be installed between screw head and painted surfaces to ensure proper ground continuity.)
- Using the screw and star-washers, fasten the control box to the control box bracket.
- Plug the pump cord and light cord (if equipped) into the receptacle on control box.
- Plug the power cord into a properly grounded power source. Check serial plate for power requirements.

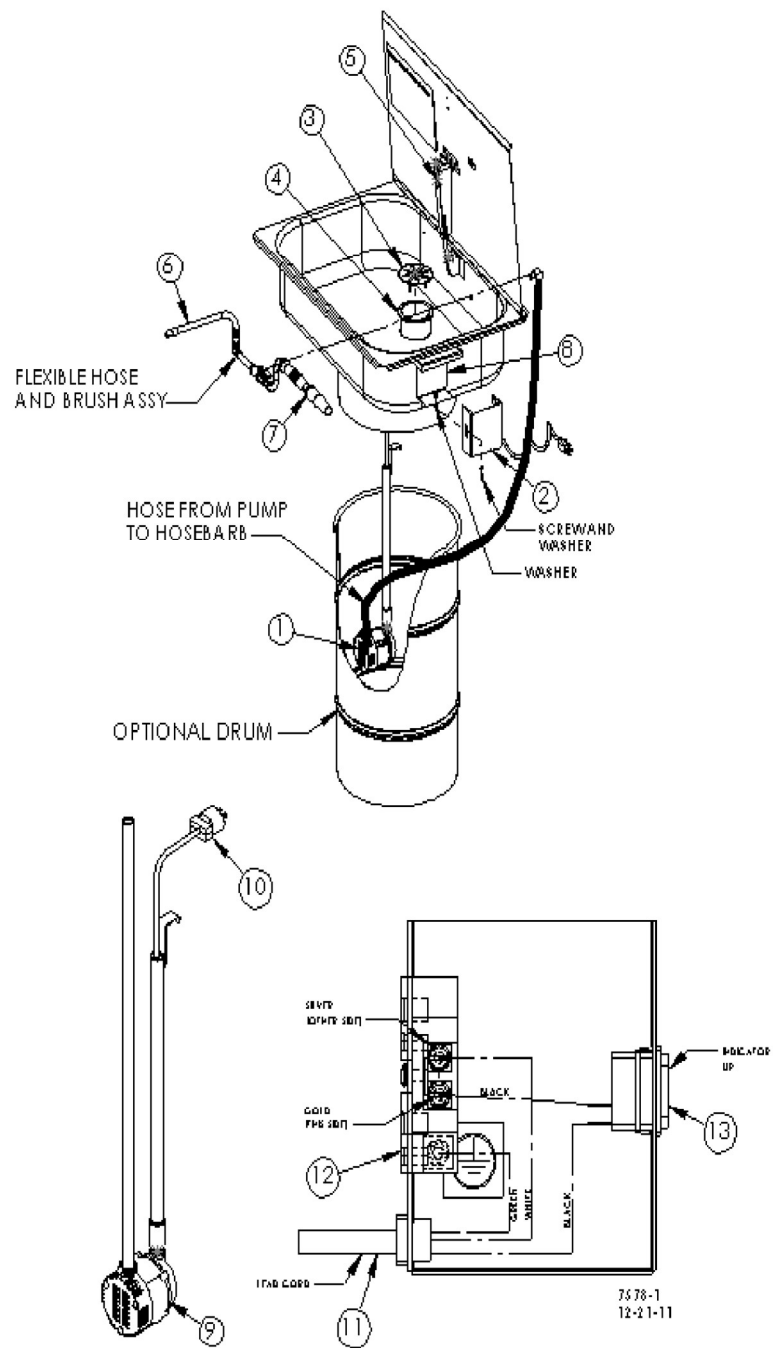
Power Requirements = 15 amp, 115 volt 60 Hz

- Fill solvent reservoir with mineral spirit based solvents. Do **NOT** add any other chemicals to the cleaning agent including, but not limited to, kerosene, fuel oil, gasoline, or chlorinated solutions. The use of any other solutions could potentially cause a hazardous condition.

Capacity Model 1602 = 30 gal.

ADDITIONAL SPECIFICATIONS

- Overall Dimensions: 26 1/2"W x 34 1/2"L x 63"H
- Inside Dimensions: 24"W x 32"L x 7 1/2"D
- Shipping Weight: 68lbs.
- 115Vac/60HZ/1PH
- 1 Amp



MACHINE DIAGRAM

| ITEM | QTY | 1601 | 1602 | DESCRIPTION |
|------|--------|---------------|---------------|---------------------------|
| 1 | 1 | 54105 | 54098 | PUMP ASSEMBLY 115V |
| 2 | 1 | 53673 | 53673 | CONTROL BOX ASSEMBLY |
| 3 | 1 | 8136 | 8136 | METAL GRATE |
| 4 | 1 | 8135 | 8135 | STRAINER |
| 5 | 1 | 54268 | 54268 | DOOR CLOSURE ASSEMBLY |
| 6 | 1 | 6024 | 6024 | FLEXIBLE HOSE |
| 7 | 1 | 8169 | 8169 | BRUSH, FLO THRU |
| 8 | 1 | 53665 | 53665 | BRACKET, CTRL BOX |
| 9 | 1 | 7317 | 7317 | PUMP, 115V 50/60HZ 205GPH |
| 10 | 1 | 8025 | 8025 | PLUG, 15A |
| 11 | 1 | 57041 | 57041 | POWER CORD |
| 12 | 1 | 8022 | 8022 | RECEPTACLE 115V |
| 13 | 1 | 01122 | 01122 | SWITCH, ROCKER |
| 14 | OPTION | 7197 (16 GAL) | 7322 (30 GAL) | DRUM, METAL |

TROUBLESHOOTING

Machine does not operate:

- Make sure the parts cleaner is connected to electric power or air supply.
- Check for incoming power. Check serial plate for power requirements.
- On electric units: check reset button on GFCI cord to make sure it is not tripped.

Little or no fluid flow thru the flow-thru brush:

- Turn pump switch "ON" or increase air pressure.
- Check the fluid level in the tank.
- Check pump intake for obstructions.

